

844-669-3537



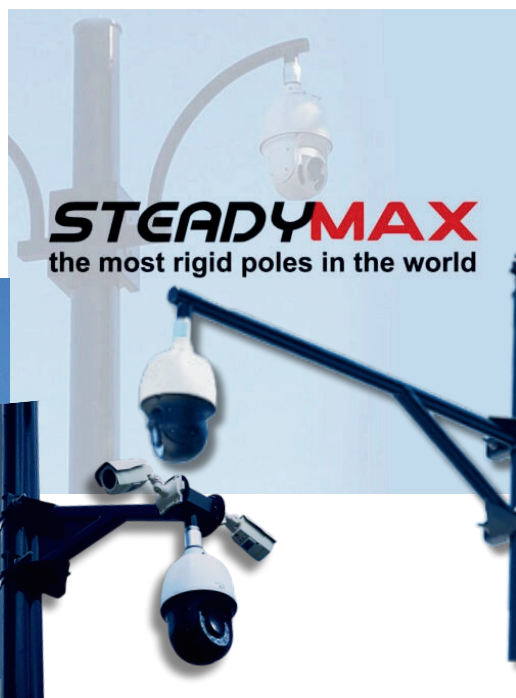
WWW.STRONGPOLES.COM



STRONGPOLES

SECURITY MOUNTING SOLUTIONS

StrongPoles makes ultra-steady camera and communication poles used at thousands of facilities, parks, and campuses ALL AROUND THE WORLD. Available in any height you need up to 25ft! Add a 5ft Communication Mast for a 30ft sturdy option.



StrongPoles: Innovating Security Mounting Solutions

Born from a desire to enhance the stability and performance of security cameras, **StrongPoles** was founded by industry experts who recognized that camera shake, and poor image quality often stemmed from subpar mounting equipment.

With nearly a decade of dedication to innovation, **StrongPoles** introduced the game-changing **4" Square Pole**, designed to minimize vibration and ensure steady camera performance across all brands.



Jean Rodrigues
SALES MANAGER

 (844) 669-3537
(903) 498-0980

 www.StrongPoles.com
Jean@StrongPoles.com

 203 N. Elm St
Kemp, TX 75143

Continuing to lead in the field, the company launched the **SteadyMax** Series, incorporating factory-installed vibration suppression systems that tackle external environmental factors head-on.

StrongPoles remains committed to providing top-tier, purpose-built solutions for various security installations, ensuring crystal clear surveillance footage every time.

STRONGPOLES
SECURITY MOUNTING SOLUTIONS

Poles	2
Pole Foundations & Forms	7
Pole Accessories	9
Outdoor Building Mounts	14
Outdoor Mounting Accessories	18
Keypad & Reader Pedestals	25
LED Lighting	28
Indoor Mounting	30
Foundation Recommendations	43



Poles

- SteadyMax
- Legacy 4" Square
- Direct Bury



STEADYMAX
the most rigid poles in the world



SteadyMax - 16 ft.

SP-SM16

16 ft. Round Non-Tapered **SteadyMax**- These engineered camera poles have a Factory-Installed Vibration Suppression System that consists of two different frequency dampeners that quell high and low frequency vibrations and oscillations that may occur during the life of the pole. Strong Pole Anchor Basket, template & nuts and washers, nut covers and hand-hole covers are included with each pole.



SteadyMax - 20 ft.

SP-SM20

20' Round Tapered **SteadyMax** - These engineered camera poles have a Factory-Installed Vibration Suppression System that consists of two different frequency dampeners that quell high and low frequency vibrations and oscillations that may occur during the life of the pole. Strong Pole Anchor Basket, template & nuts and washers, nut covers and hand-hole covers are included with each pole.



SteadyMax - 25 ft.

SP-SM25

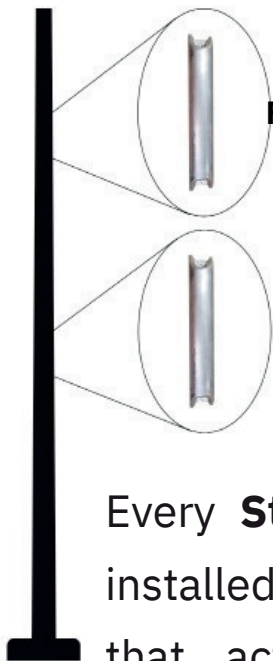
25' Round Tapered **SteadyMax** - These engineered camera poles have a Factory-Installed Vibration Suppression System that consists of two different frequency dampeners that quell high and low frequency vibrations and oscillations that may occur during the life of the pole. Strong Pole Anchor Basket, template & nuts and washers, nut covers and hand-hole covers are included with each pole.



SteadyMax-FL - 12 ft.

SP-SM12FL

12' Round **SteadyMax** Pole specially created to withstand 195mph Florida winds. These engineered camera poles have a Factory-Installed Vibration Suppression System that consists of two different frequency dampeners that quell high and low frequency vibrations and oscillations that may occur during the life of the pole. Strong Pole Anchor Basket, template & nuts and washers, nut covers, and hand-hole covers are included with each pole.



First Mode Vibration Dampener

Second Mode Vibration Dampener

Every **SteadyMax** comes with a factory installed **Vibration Suppression System** that actively fights against first and second mode vibrations and shake due to wind and site frequency and resonance.

Extra Hand Hole Add-On

SP-SMXH



Add an extra hand hole to any of our **SteadyMax** Poles

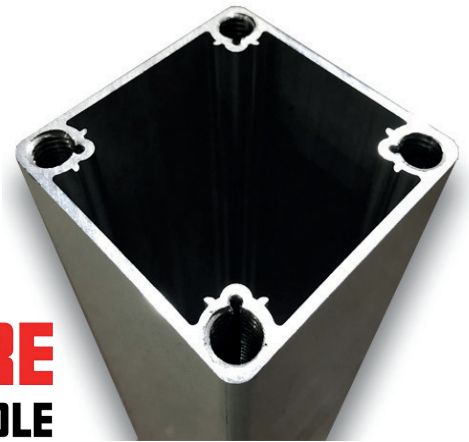
Model	EPA Wind Velocity (mph)			
	90 mph	100 mph	120 mph	150 mph
SP-SM12FL	17.4	13.5	8.89	5.76
SP-SM16	14.5	11	6.8	3.5
SP-SM20	14.2	10.5	5.7	2.8
SP-SM25	12.6	9.1	4.3	1.5

THE TABLE ABOVE SHOWS THE EFFECTIVE PROJECTED AREA (EPA) WIND VELOCITY RATINGS FOR DIFFERENT STRONGPOLES MODELS AT VARIOUS WIND SPEEDS. THE VALUES REPRESENT THE MAXIMUM WIND SPEED (IN MPH) THAT EACH MODEL, CAN WITHSTAND, WHILE MAINTAINING OUR MAXIMUM AVAILABLE MOVEMENT CONSIDERING A GUST FACTOR OF 1.3. THIS GUST FACTOR ACCOUNTS FOR SUDDEN INCREASES IN WIND SPEED, ENSURING THE POLES CAN HANDLE SHORT BURSTS OF HIGHER WIND SPEEDS WITHOUT COMPROMISING STABILITY.

LEGACY

4" SQUARE POLES

4" SQUARE CAMERA POLE



Built out of a special Aerospace Aluminum, these **4" Security Camera Poles** are designed to reduce the amount of movement and shake commonly found with many light poles. Using **StrongPoles** solves a whole host of problems with using existing light poles and hose clamps for your security cameras, sensors and detectors.

Our 4" Anchor Basket is not included with our 4" Camera Poles (unlike our SteadyMax poles.) Add a 4" Anchor Basket for an additional fee.

- Designed to fit any technology –any brand– Wireless or Wired
- Patented “No-Welds” Technology yields more strength than any other pole (35,000 psi yield strength)
- Internal Corner Tubing Shafts molded in
- Available in White or Dark Bronze/Black Finish



Legacy Pole with Fixed Base (Standard Base)



4" Tilt Over Base

Upgraded option for the 4" Square Camera Poles to allow the pole to be tilted over for easy access to the top of the pole.



SP-TOB

- 4" Square Pole - 5 ft** SP-5
- 4" Square Pole - 8 ft** SP-8
- 4" Square Pole - 10 ft** SP-10
- 4" Square Pole - 12 ft** SP-12
- 4" Square Pole - 15 ft** SP-15

STRONGPOLES SECURITY MOUNTING SOLUTIONS		EPA Wind Velocity (mph)				LEGACY 4" SQUARE POLES	
Model	90 mph	100 mph	120 mph	150 mph			
SP-5	22	17.5	12	9			
SP-8	20.5	16.2	11	8.5			
SP-10	18.9	14.9	10.1	7.8			
SP-12	17.4	13.5	8.89	5.76			
SP-15	15.8	11.9	6.4	3.3			

THE TABLE ABOVE SHOWS THE EFFECTIVE PROJECTED AREA (EPA) WIND VELOCITY RATINGS FOR DIFFERENT STRONGPOLES MODELS AT VARIOUS WIND SPEEDS. THE VALUES REPRESENT THE MAXIMUM WIND SPEED (IN MPH) THAT EACH MODEL, CAN WITHSTAND, WHILE MAINTAINING OUR MAXIMUM AVAILABLE MOVEMENT CONSIDERING A GUST FACTOR OF 1.3. THIS GUST FACTOR ACCOUNTS FOR SUDDEN INCREASES IN WIND SPEED, ENSURING THE POLES CAN HANDLE SHORT BURSTS OF HIGHER WIND SPEEDS WITHOUT COMPROMISING STABILITY.



SQUARE DIRECT BURY POLES

The advantages of aluminum poles make them the perfect option for direct buried applications.

With a record of successful installations throughout the country, **StrongPoles** Aluminum Direct Buried Poles provide industry professionals with significant overall job savings.

StrongPoles Aluminum Direct Buried Poles are the perfect solution to the high maintenance alternative of composite poles.

FIVE INCH DIRECT BURY



- 8 ft - SP-DB8
- 11ft - SP-DB11
- 16 ft - SP-DB16
- 20 ft - SP-DB20
- 25 ft - SP-DB25



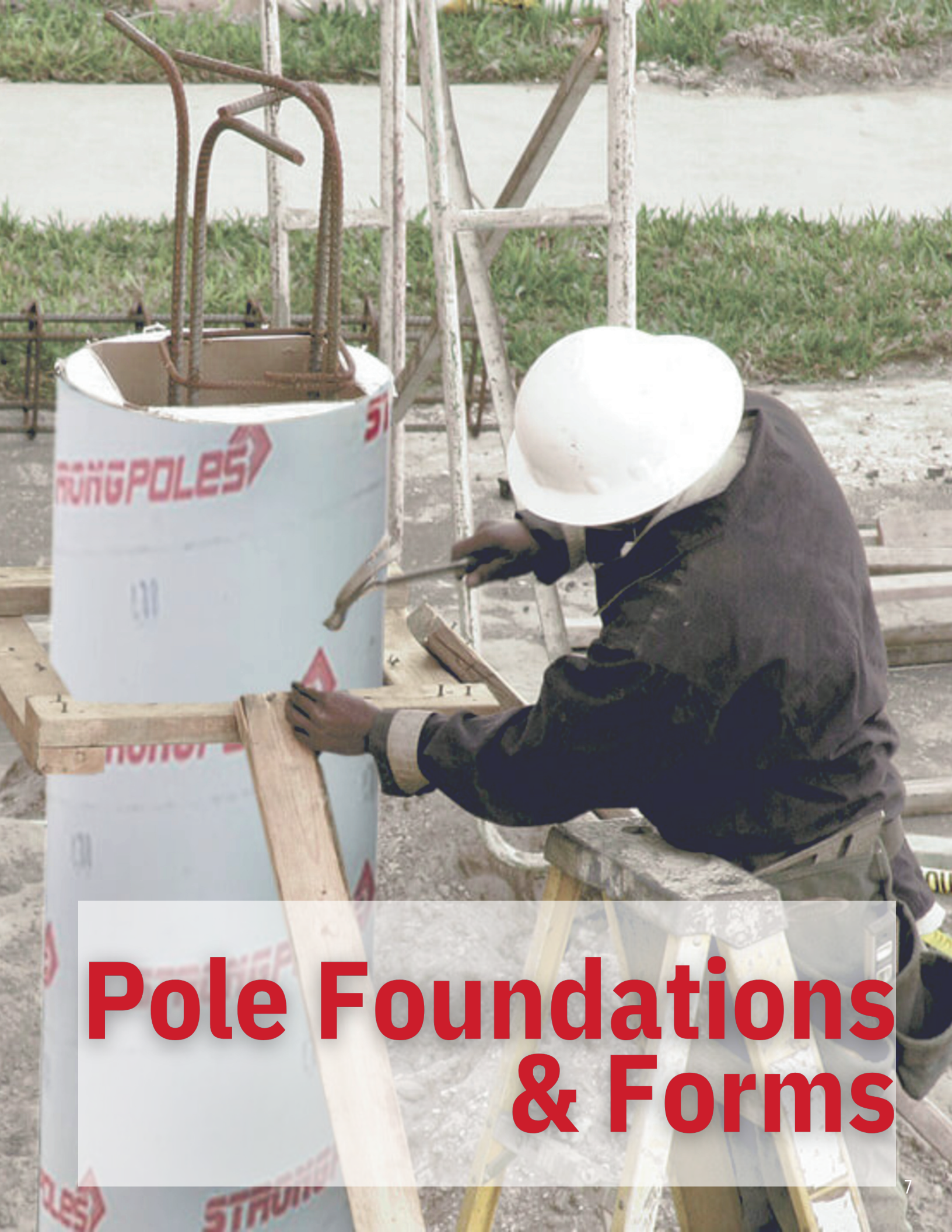
- 8 ft - SP-4-DB8
- 12 ft - SP-4-DB12
- 16 ft - SP-4-DB16

5" to 4" Pole Adapter

Easily transition from a 5" Direct Bury pole to a 4" pole with this versatile adapter. Compatible with most accessories (excluding pedestal mounts), this adapter ensures a seamless fit and reliable performance for your mounting needs.

SP-Adapter





Pole Foundations & Forms

StrongForms

SP-SMFG



Diameter/Height:	SKU:
18" / 5'	StrongForms-18-5
24" / 5'	StrongForms-24-5
30" / 6'	StrongForms-30-6

SP-SM



Anchor Basket -for SteadyMax Poles

Anchor Baskets-3/4" or 1" NC / Studs / Wooden Template

Our Anchor Baskets make installation much faster, and alignment much easier. Simply push the Anchor Basket down into the wet concrete until the template is flush with the top of the concrete and be sure that the conduit rises well above the hole in the template. Then, after the concrete has cured, remove the template and you are ready to mount the pole.

POLE SIZE	STRONGFORM	ANCHOR ASSEMBLY PART
SteadyMax SP-SM12	StrongForm-18-5	Included
SteadyMax SP-SM16	StrongForm-18-5	Included
Anchor Baskets Bolts: 3/4" NC		
POLE SIZE	STRONGFORM	ANCHOR ASSEMBLY PART
SteadyMax SP-SM20	StrongForm-24-5	Included
SteadyMax SP-SM25	StrongForm-30-6	Included
Anchor Baskets Bolts: 1" NC		

Each Anchor Basket has been preset to have a projection of the bolts above the concrete at the perfect height to allow the finish caps to fit onto the pole base.

****MUST SPECIFY WHICH BASE IT'S FOR STANDARD OR TILT OVER BASE****



Anchor Basket -for 4" Legacy Poles

Anchor Baskets- 5/8" NC / Studs / Wooden Template

Anchor Baskets make installation much faster, and alignment much easier.

SP-AB
SP-AB-TOB

POLE SIZE	STRONGFORM	ANCHOR ASSEMBLY PART
4' Square Poles Fixed Base	StrongForm-18-5	SP-AB
4' Square Poles Tilt-Over Base	StrongForm-18-5	SP-AB-TOB

Tilt-Over Base is an upgrade and an additional charge

Light Pole Foundation Adapter

SP-LPA



Convert existing anchor foundations with a wide range of bolt circles usable with **StrongPoles** Bases. Eliminate the cost of removing the existing foundation. Saves the cost of labor, forms, bolts, and concrete by adapting the existing pattern to fit **StrongPoles** Bolt pattern.

The adapter will accommodate foundation Bolt Circle of:

Top Bolt Circle	7.5" - 12"
Bottom Bolt Circle Range - Diamond	10.5" - 14"
Bottom Bolt Circle Range - Square	10.5" - 14.5"

Light Pole Adapter Hardware

SP-LPAH

Light Pole Adapter Hardware
Bolt Size: 5/8" x 3"
Washer Size: 5/8" SAE Flat HDG
Nut Size: 5/8-11 A563 GRA HDG



Leveling Shims

SP-LEVEL-001

3-1/8" W x 3-1/2" L x 1/16" H Leveling Shims



Pole Accessories

Products that mount directly to

- **SteadyMax** Poles
- 4" Legacy Poles
- 4" & 5" Direct Bury Poles

Fence Guard

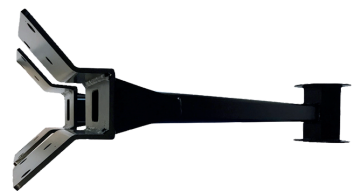
SP-SMFG

Extending around 32" from the pole, the Fence Guard is designed to be attached to round poles and aid camera analytics down fence or property lines. It can accommodate - two cameras (domes or bullets) and a PTZ on the 1.5" NPT threaded connector; U-bolts provided with order.

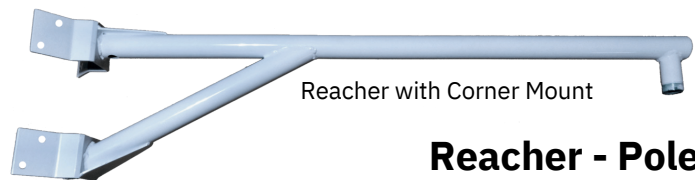


Fence Guard with Pole Mount
SP-SMFG-PM

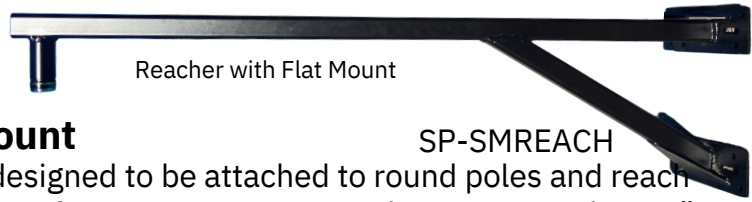
Fence Guard with Flat Mount
SP-SMFG-FM



Fence Guard with Corner Mount
SP-SMFG-CM



Reacher with Corner Mount



Reacher with Flat Mount

Reacher - Pole Mount

SP-SMREACH

5 ft Reacher Mount is designed to be attached to round poles and reach out over a property line or fence. It can accommodate a PTZ on the 1.5" NPT threaded connector. Other camera types can be used with the use of additional mounting accessories: U-bolts provided for **SteadyMax** poles.



SIDE VIEW

7 ft Reacher with nipple placement at 60"-Check it out online SP-SMREACH7-60

Reacher - Corner Mount

SP-SMREACHCM

5' Corner Mount Reacher is designed to be attached to exterior corners of buildings. It can accommodate a PTZ on the 1.5" NPT threaded connector. Other camera types can be used with the use of additional mounting accessories.



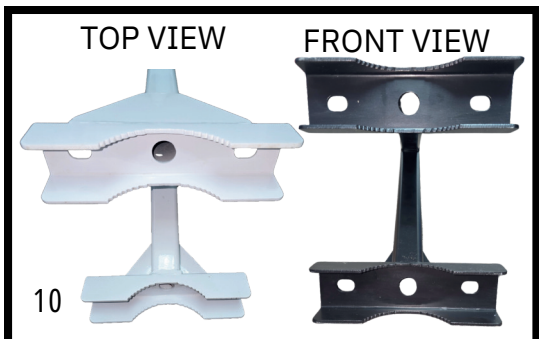
Reacher - Flat Mount

SP-SMREACHFM

5' Flat Mount Reacher is designed to be attached to exterior of buildings. It can accommodate a PTZ on the 1.5" NPT threaded connector. Other camera types can be used with the use of additional mounting accessories.



Fence Guard & Reacher Mounting Options:

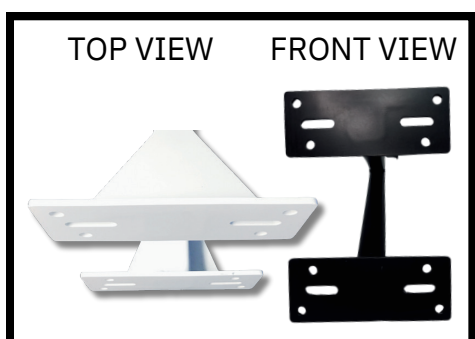


TOP VIEW

FRONT VIEW

10

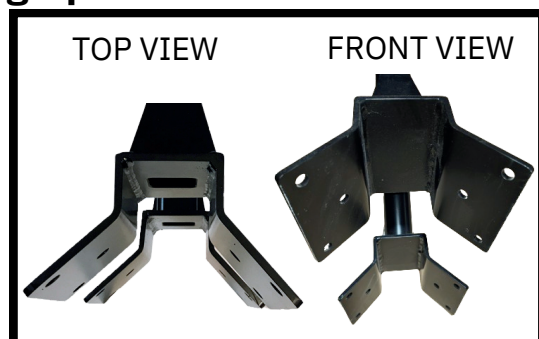
POLE MOUNT



TOP VIEW

FRONT VIEW

FLAT MOUNT



TOP VIEW

FRONT VIEW

CORNER MOUNT

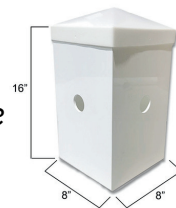
Birdhouse

SP-PTZEM

The *Birdhouse* is an 8x8x10 mounting platform (8x8x8 actual mounting space) designed to be affixed to the top of any **SteadyMax**, 4" Square Camera Poles, or 5" Direct Bury (with adapter) allowing you to attach equipment to all four sides.



SP-PTZEM16 is an 8x8x16 mounting platform *Birdhouse*



SP-PTZEM16

Birdhouse w/ RR Mount

SP-RRMountBH

Platform for top mount PTZs Plus PTZEM



SP-SMWrap

Wrap Around Mount

Wrap Around Steady Max Additional Camera Platform - Originally made for 25' poles with extra hand-hole at the 20' level but will fit any height on the 12' and 16' **SteadyMax** poles and anywhere from half way to the top on the 20' and 25' poles. Mountable on 3 sides / includes 2 stainless steel mounting bands. Weight capacity: 120 lbs.



Wrap Around w/ RR Mount

SP-RRMountWrap

Side Mount PTZ Platform for top mount PTZs Plus SMWrap





6x6 Junction Box

SP-TMJB

Designed to be mounted on top of a pole; each 4x6 face of the 6x6 Junction Box can be mounted to.



4Ft Building Mount Bullet Box

SP-BMBB4

6Ft Building Mount Bullet Box

SP-BMBB6

These wall-mounted boxes are designed to securely hold bullet and/or dome cameras. It features a 4 ft or 6 ft mounting height, an anti-roosting pyramid cap to prevent birds from nesting and includes a wiring and device junction box.

Available in White Only



HD Square Pole Top Pedestal

SP-TMSQHD

Heavy Duty Top Mount Square Pedestal Mount



Twin HD Square Pole Top Ped-

SP-TwinTMSQ

Twin Top Mount Square Pedestal Mount

Birdhouse with Antenna Mast



Fence Guard





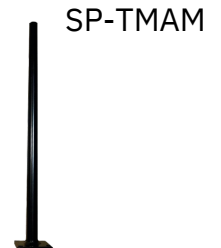
Communications Mast

This sturdy, ultra-rigid Mast not only adds 5 feet to the height of any Strong Pole, including **SteadyMax**, but gives you the ability to mount multiple levels and types of repeaters, transmitters, antennas and other types of communications gear, up and down the length of the Mast.

Available in Dark Bronze (Black) Only

Pole Top Antenna Mast

Measuring 39" high, the Pole Top Antenna Mast provides ample reach and space for mounting wireless antennas or other security equipment on top of your pole. Perfect for top of **SteadyMax** or any of the 4" Square Poles.



Pole Top Mounting Pedestal

SP-TenMountPed

The 4x4x7.5 inch mounting pedestal provides an excellent mounting platform for Fly-Outs, Fly-Overs (see page 15) or any of our mounting accessories with our *Standard Side Mounting Plate* Configuration like the Tenon Mounts on page 22.

SteadyMax with Pole Top Mounting Pedestal, LED Area Lights, and Fly-Out



SteadyMax with Pole Top Mounting Pedestal, LED Area Light, and 5' Reacher



Outdoor Building Mounts

Products that mount to the
exterior of buildings



Fly-Over

SP-PTM

The Fly-Over was designed to provide a wider field of view for PTZ cameras that hang from the 1.5" NPT threaded connector. There are many ways you can use this mount from PTZs to panoramic cameras.
**Standard Side Mounting Plate*



Fly-Out

SP-PTMRFO

Like the Fly-Over the Fly-Out provides you with a wider field of view with the added functionality of mounting it directly to a wall using the available wall mount (see above). The Fly-Out has a 1.5" NPT threaded connector.

**Standard Side Mounting Plate*



Fly-Out Wall Mount

SP-PTMRFOWM

Fly-Out Wall Mount is a simple yet powerful little device that allows you to attach one of our Fly-Outs (see below) to a wall.



HD Parapet with 4" tenon, LED Light, and PTZ Camera

Fly-Out with Fly-Out Wall Mount and Dual Camera Mount





Surface Mount Pole

SP-SMP15
 SP-SMP30
 SP-CRPM48

Built with the same square aluminum stock as our 4" Square Camera Poles these 15", 30", and 48" Surface Mount Pole are perfect for adding security mounting options to nearly any surface.

48" Surface Mount Pole is available in hammered black only.

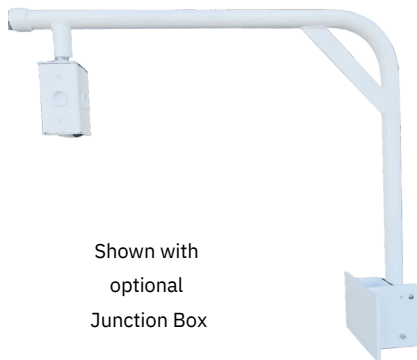


Parapet Mount

SP-Parapet

This sturdy Parapet Mount attaches to a Parapet Wall and can be rotated 360 degrees to accommodate any mounting angle. The 1.5" NPT threaded connection is perfect attaching a PTZ and the "Back Flip" design makes mounting and adjusting cameras a breeze! For added ability see the PTZ extensions and adapters on page 22.

Only available in white.



Shown with optional Junction Box

HD Parapet Mount

SP-ParapetHD

The Heavy-Duty Parapet Wall Camera Mount is perfect for mounting multiple PTZ Cameras to the 1.5" NPT threaded connection and wireless devices to parapet walls. Its sturdy construction is capable of supporting up to 50lbs without significant bending. The 360-degree rotation and "Back Flip" design make this an unbeatable mount.

Only available in white.

Can be paired with **Parapet Extension** - SP-TPEPMO



4" Square Pole Wall Mount

SP-WM



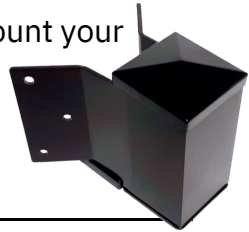
The 4" Square Wall Mount works with our 5', 8', 10', 12' and 15' **Legacy** 4" Square Camera Poles (see page 5) allowing you to mount them at any height on an exterior building wall.



Corner Mount

SP-CM

3-sided corner mount with top & bottom caps allow you to mount your equipment by drilling holes where you need them.



HD Corner Mount

SP-HDCM

Our Heavy-Duty Corner Mounts are made out of the same extruded aluminum that our 4" Square Camera Poles are made of so you know they are strong. 3 sides are fitted with our *Standard Side Mounting Plate* configuration.



Flat Mount

SP-CM-Flat

3-sided flat mount with top & bottom caps allow you to mount to any wall.

HD Corner Wall Mount with 2-Foot Arm, Side Mount Antenna Mast, Dual Camera Mount, and Fly-Outs



HD Corner Wall Mount with 2-Foot Arms, Horizontal Tenon Mount and LED Light



Outdoor Mounting Accessories



Side Mount Antenna Mast

SP-SMAM

The Side Mount Mast is constructed with 1-1/2" aluminum tubing and attaches to any of our products with our *Standard Side Mounting Plate* configuration. This 36" high mast is tall enough for the largest antennas. The top end is capped with a weatherproof plastic cap insert.



Fly-Over / Fly-Out Dome Mount

SP-DomeMountFO

This Dome Mount is designed to fit to the 1.5" NPT threaded connection on the Fly-Over & Fly-Out Mounts but could be fitted to any of our accessories with the same 1.5" NPT fitting.



Dual Camera Mount

SP-DualParaMount

Dual Dome/Bullet Adapter is a perfect complement to our 2 Foot Arm, Parapet Mounts, 5' Reacher and more with 1.5" NPT fitting.



Dual Camera Mount with PTZ Adapter

SP-DualParaMountXN

This Dual Camera Mount fits onto any **StrongPoles** Accessories that have a 1-1/2" NPT fitting (examples: Fly-Out, Reacher, Parapet Mount, Any PTZ Mount with 1-1/2" NPT Fitting).



1 Foot Arm

SP-1FtArmGusset

The 1 Foot Arm is a fantastic utility mount. Perfect for mounting PTZs on the 1.5" NPT threaded connection or other cameras with other available accessories.



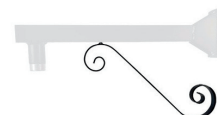
2 Foot Arm

SP-2FtArmGusset

The 2 Foot Arm is a fantastic utility mount. Perfect for mounting PTZs on the 1.5" NPT threaded connection or other cameras with other available accessories.

Standard Side Mounting Plate

SP-Flourish



SP-PTZEM-AT

Antenna Mast for Birdhouse

This 39" tall Antenna Mast is designed to be attached to our Birdhouses (see page 11).



Junction Box w/ Side Mounts

SP-JB-SMP

4"x4"x7" Junction Box with 3 *Standard Side Mounting Plate Configurations*



Fly-Out Pedestal

SP-FlyoutPed

7.5" tall piece of 4" SP with mounting holes Square fly-out pedestal

Standard Side Mounting Plate configurations



Side Mount Platform

SP-PACM

Pedestal Attached Camera Mount
Standard Side Mounting Plate



No matter the type of wall or mounting place, **StrongPoles** has the perfect solution for you.



Junction Box with 2-Foot Arms and additional Junction Box

Junction Box with Side Mount Platform

Fly-Out Pedestal with Fly-Out



Panoramic Camera Mount

The Panoramic Camera Mount can be attached to any of our mounts with the 1.5" NPT threaded connection.



StrongMount-44

StrongMount-44

4x4x3 Nema/UL 6P (IP68) Impact and Sun Resistant Polycarbonate Enclosure



StrongMount-55

StrongMount-55

5x5x3 Nema/UL 6P (IP68) Impact and Sun Resistant Polycarbonate Enclosure



StrongMount-66

StrongMount-66

6x6x3 Nema/UL 6P (IP68) Impact and Sun Resistant Polycarbonate Enclosure



StrongMount-86

StrongMount-86

8x6x3 Nema/UL 6P (IP68) Impact and Sun Resistant Polycarbonate Enclosure



StrongMount-98

StrongMount-98

9x8x3 Nema/UL 6P (IP68) Impact and Sun Resistant Polycarbonate Enclosure

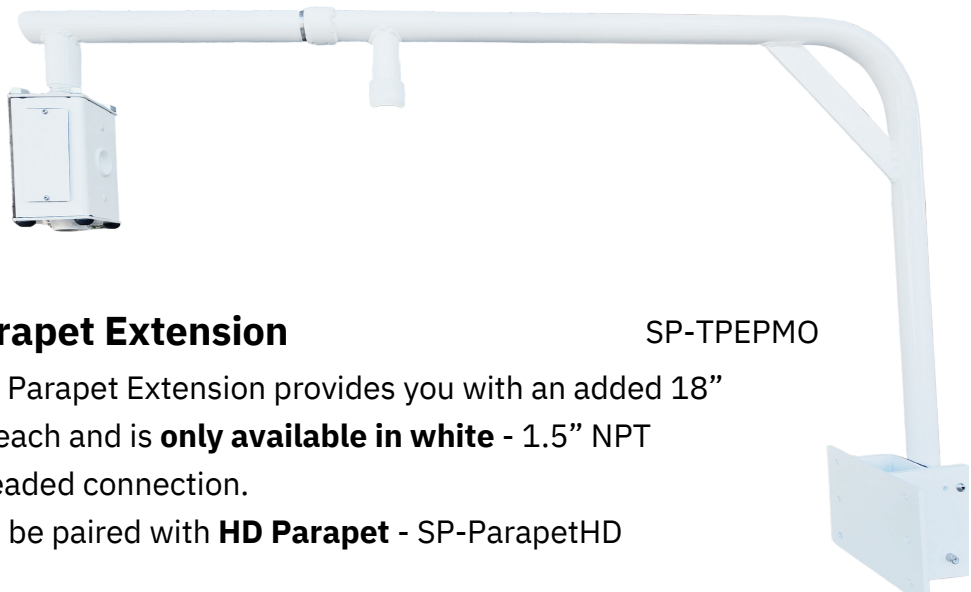


StrongMount-2016

StrongMount-2016

20x16x8 Nema/UL 6P (IP68) Impact and Sun Resistant Polycarbonate Enclosure

HD Parapet with Extension and Junction Box



Parapet Extension

SP-TPEPMO

The Parapet Extension provides you with an added 18” of reach and is **only available in white** - 1.5” NPT threaded connection.



Can be paired with **HD Parapet** - SP-ParapetHD



Twin PTZ Adapter

SP-TPA

Twin PTZ Adapter 18” long adapter that will connect to any accessory with a 1.5” NPT allowing two PTZs to be attached.



4" Top Tenon Mount

SP-4SPV

4" Top Tenon mount is designed for easy installation on 4" round poles. It provides a secure and stable connection for your lighting fixtures, ensuring they stay firmly in place.



Horizontal Tenon Mount

SP-TenonH

6” Horizontal Tenon that can be mounted directly to the Strong Poles Tenon Mounting Platform. Tenons mounts are all 2 3/8” and any combination of up to four of the horizontal or vertical tenons can be mounted on one Tenon Mounting Pedestal.

Standard Side Mounting Plate



Vertical Tenon Mount

SP-TenonV

4” Vertical Tenon that can be mounted directly to the Strong Poles Tenon Mounting Platform. Tenons mounts are all 2 3/8” and any combination of up to four of the horizontal or vertical tenons can be mounted on one Tenon Mounting Pedestal.

Standard Side Mounting Plate



HD Parapet Tenon Mount

SP-ParapetHDTenon

4” Tenon mount adapters are helpful tools when you need to install your light or security camera onto a Parapet PTZ Camera mount, wall, or other surface. 1.5” NPT threaded connection.



Angle Adjustable Antenna Mount

Angle Adjustable Antenna Mount for outdoor eaves and/or walls mounting.

1.5" NPT Threaded Pipe

Available in White Only

SP-AngAdjAntMountHD



Heavy Duty Angle Adjustable Antenna Mount

Angle Adjustable Antenna Mount for outdoor eaves and/or walls mounting.

1.5" NPT Threaded Pipe

Available in White Only

SP-AECSmall



Aluminum Equipment Cabinet-Small

Aluminum vent enclosure, vent screen and mounting back-plate measure 16" width, 20.5" height, and 10" depth with then in. Inside dimensions of 16" width, 16" height, 10" depth.

SP-AECLarge



Aluminum Equipment Cabinet-Large

Aluminum vent enclosure, vent screen and mounting back-plate measure 18" width, 22.5" height, and 18" depth with an inside dimension of 18" width, 18" height, and 18" depth.

SP-BandMount6



6" Band Mount

The SP-BandMount6 works with our 12ft and 16ft **SteadyMax** Poles

SP-BandMount8



8" Band Mount

The SP-BandMount8 works with our 20ft and 25ft **SteadyMax** poles



Square U-Bolts

Square U-Bolts, washers and nuts for 4" Poles



Square U-Bolts

Square U-Bolts, washers and nuts for 5" Poles



1.5" Coupler

1.5" to 1.5" double aluminum pipe coupler w/ 2 set screws
1.5" NPT threaded connection

REDUCERS

Polypropylene Male Reducers Schedule 80 (Blk)



SP-Reducer - 3/4" to 1/2"



SP-Reducer - 1.5" to 3/4" to 1/2"



SP-Reducer - 1.5" to 1" to 1/2"



SP-Reducer - 1.5" to 3/4"



SP-Reducer - 1.5" to 1"

BUSHINGS

Polypropylene Reducing Bushings Schedule 80 (Blk)



SP-Bushing-3/4"M x 1/2"F



SP-Bushing-1.5"M x 3/4"F



SP-Bushing-1.5"M x 1"F

NIPPLES

Polypropylene Male Nipples Schedule 80 (Blk)



SP-Nipple-1/2"



SP-Nipple-3/4"



SP-Nipple-1"



SP-Nipple-1"x1/2"



SP-Nipple-1.5"x1"



SP-Nipple-3/4"x1/2"

A black metal pedestal with a keypad and reader mounted on it. The keypad is a 4x4 grid of buttons with numbers 1-9, 0, and a star symbol. The reader is a circular device with a blue light. The pedestal is set against a chain-link fence and greenery.

Keypad & Reader Pedestals



Direct-Bury Gooseneck Keypad Pedestal

SP-DBP66

66" height total made from 1.5" tubing so 2' can be buried and 42" left above ground

Available in Hammered Black Only



SP-PMP48

Gooseneck Pedestal - 48

Pad Mounted 48" Model made from 1.5" tubing

Available in Hammered Black Only



SP-PMP42

Gooseneck Pedestal - 42

Pad Mounted 42" Model made from 1.5" tubing

Available in Hammered Black Only



SP-CMP36

Gooseneck Pedestal - 36

Curb Mounted 36" Model made from 1.5" tubing

Available in Hammered Black Only

SP-DualHeavyP



Dual Height Pad Mounted Pedestal

For Cars & Big Trucks - made from 3" square with lower face at 42" and upper face at 72"

Available in Hammered Black Only

SP-PM484



HD Architectural Keypad Pedestal

Heavy-Duty 48" height with faceplate at 42", made from 4" square aluminum with Pyramid top cap or Flat aluminum top cap.

Available in Hammered Black Only

SP-CRPM48



Touchless Card Reader Pedestal

48" height made from 4" square aluminum with aluminum with Pyramid top cap or Flat aluminum top cap options.

Available in Hammered Black Only





LED Lighting

for parking lots & other outdoor areas



100W - LED Area Light

SP-X100W

100W LED lights with Type III lens, 4000 - 5000K Color Temp (Daylight), 2-3/8" Tenon Slip-fit Mounts, Accept any Voltage from 120-277V AC



200W - LED Area Light

SP-X200W

200W LED Light with Type III lens, 4000 - 5000K Color Temp (Daylight), 2-3/8" Tenon Slip-fit Mounts, Accept any Voltage from 120-277V AC



250W - LED Area Light

SP-X250W

250W LED Light with Type III lens, 4000 - 5000K Color Temp (Daylight), 2-3/8" Tenon Slip-fit Mounts, Accept any Voltage from 120-277V AC



320W - LED Area Light

SP-X320W

320W LED Light with Type III lens, 4000 - 5000K Color Temp (Daylight), 2-3/8" Tenon Slip-fit Mounts, Accept any Voltage from 120-277V AC



SWITCHABLE - LED Area Light-80/100/120/150W

SP-X80/100/120/150W

Switchable LED Light with Type III lens, 4000 - 5000K Color Temp (Daylight), 2-3/8" Tenon Slip-fit Mounts, Accept any Voltage from 120-277V AC



SWITCHABLE - LED Area Light-240/260/280/310W

SP-X240/260/280/310W

Switchable LED Light with Type III lens, 4000 - 5000K Color Temp (Daylight), 2-3/8" Tenon Slip-fit Mounts, Accept any Voltage from 120-277V AC



LED Area Light Photocell

SP-XPC

Photocell for all SP-X LED lights

Input voltage	Power	CCT	Lens	Sensor	Arm
HV	320W	40K	YYY	Z	R
Blank AC120-277V/	80W	40K 4000K	III Type III	D With	S Slip Fitter Arm
HL AC120-347V	100W	50K 5000K	V Type V	N Without	E Extruded Arm
HV 277-480V	150W	57K 5700K	90 90°		M Surface mount
	250W				F Slip Fitter+Extruded Arm
	320W				



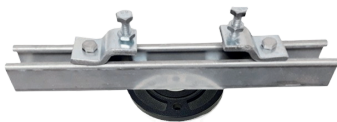
Indoor Mounting



Beam Clamp with Egyptian Pipe Hanger

IMS-BCE

Beam Clamp with the "Egyptian" threaded ceiling mount pipe drop adapter



Beam Clamp with Round Pendant Pipe Hanger

IMS-BCPM

Beam Clamp with Round Pendant Pipe Hanger



Pipe Clamp with Egyptian Pipe Hanger

IMS-PCE

Pipe Clamp with the "Egyptian" threaded ceiling mount pipe drop adapter



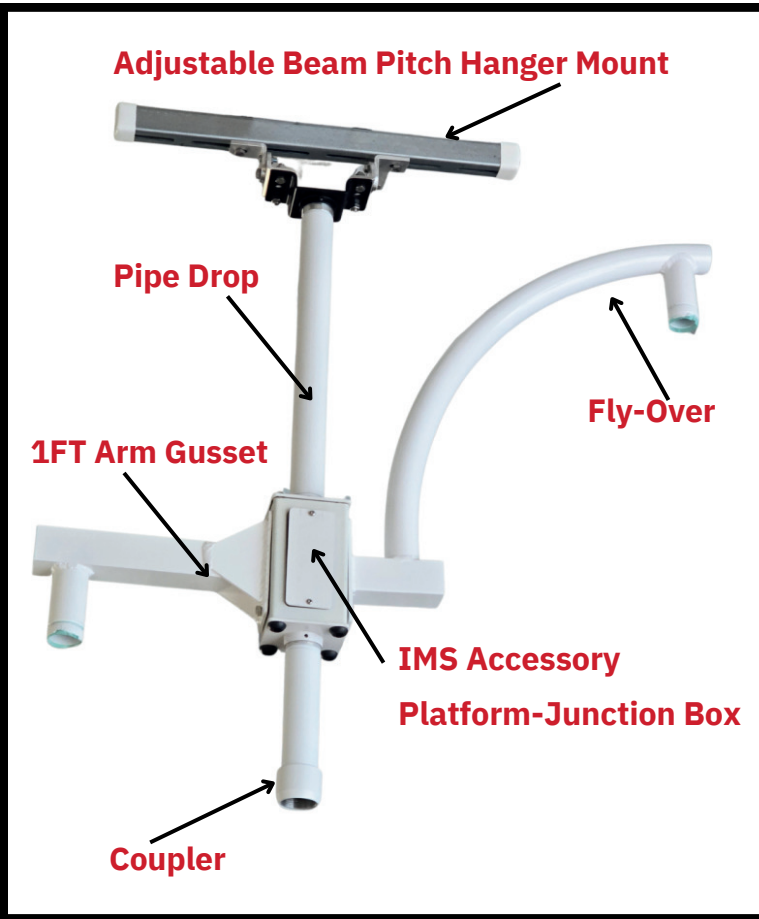
Round Pendant Pipe Hanger with concrete anchors

IMS-PM

Round Pendant Pipe Hanger w/ concrete anchors. 1.5" NPT threaded connection



CamBox with Pipe Clamp





8" Pipe Drop

IMS-PD8in

8 inch long 1.5" NPT Threaded Pipe Drop with PTZ Collar
Can be attached to any of the Egyptian or Round Pendant pipe hangers or any accessory with a 1.5" NPT fitting.



19.5" Pipe Drop

IMS-PD19in

19.5 inch long 1.5" NPT Threaded Pipe Drop with PTZ Collar
Can be attached to any of the Egyptian or Round Pendant pipe hangers or any accessory with a 1.5" NPT fitting.



4' Pipe Drop

IMS-PD4ft

4 ft. 1.5" NPT Threaded Pipe Drop with PTZ Collar
Can be attached to any of the Egyptian or Round Pendant pipe hangers or any accessory with a 1.5" NPT fitting.



6' Pipe Drop

IMS-PD6ft

6 ft. 1.5" NPT Threaded Pipe Drop with PTZ Collar
Can be attached to any of the Egyptian or Round Pendant pipe hangers or any accessory with a 1.5" NPT fitting.



8' Pipe Drop

IMS-PD8ft

8 ft. 1.5" NPT Threaded Pipe Drop with PTZ Collar
Can be attached to any of the Egyptian or Round Pendant pipe hangers or any accessory with a 1.5" NPT fitting.



10' Pipe Drop

IMS-PD10ft

10 ft. 1.5" NPT Threaded Pipe Drop with PTZ Collar
Can be attached to any of the Egyptian or Round Pendant pipe hangers or any accessory with a 1.5" NPT fitting.



Available in White & Black





IMS Junction Assembly

IMS-J1TFB

4"x 4"x7" Junction with threaded top and solid bottom plate and one 2"x 4.5" access / hand hole opening with gasket and cover.

1.5" NPT threaded connection



IMS Junction In-Line Assembly

IMS-J2T

4"x 4"x7" Junction with threaded top and Bottom and one 2"x4.5" access / hand hole opening with gasket and cover.

1.5" NPT threaded connection



IMS Accessory Platform

IMS-MAP1TFB

4"x 4"x7" Accessory Mounting Platform with threaded top and solid bottom plate.

Standard Side Mounting Plate Configuration on all four sides

1.5" NPT threaded connection



IMS In-Line Accessory Platform

IMS-MAP2T

4"x 4"x7" Accessory Mounting Platform with Threaded top and bottom plate. Standard Side Mounting Plate Configuration on all four sides.

1.5" NPT threaded connection



6x8 Multi-Purpose Box

IMS-MP68

Multi-Purpose 6"x8" double threaded box with 2"x 4.5" access hand hole and 3 accessory attachment holes.

1.5" NPT threaded connection



8x10 Multi-Purpose Box

IMS-MP810

Multi-Purpose 8"x10" double threaded open box with 4 accessories attachment holes.

1.5" NPT threaded connection



HD Parapet
with Junction Box
Parapet Extension
Twin PTZ Adapter

SteadyMax poles are designed to provide a stable and secure mounting platform for your security cameras, ensuring they stay in place even during the most severe weather conditions.

**WHEN THE WINDS ROAR
STRONG POLES
ENDURES**





Need Expert Advice for Your Project?

Ask Our Design Specialists!

Not sure how to accomplish your current project goals? Let our design specialists at **StrongPoles** help you determine exactly what you need.

Whether it's choosing the right mounting solutions or understanding specific product features, we're here to guide you every step of the way.

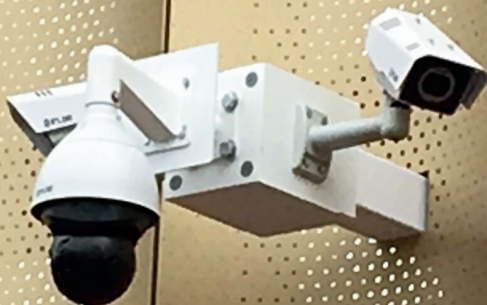


Contact us today to ensure your project is a success!



844-669-3537

www.StrongPoles.com





16" StrongStrut - Band Clamp

IMS-16long3/8B

16" long Strong Strut with stainless steel band and end caps



8" StrongStrut - Band Clamp

IMS-8long3/8B

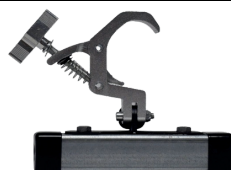
8" long Strong Strut with stainless steel band and end caps



16" StrongStrut - Pipe Clamp

IMS-16long3/8H

16" long Strong Strut with pipe clamp and end caps



8" StrongStrut - Pipe Clamp

IMS-8long3/8H

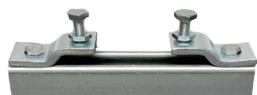
8" long Strong Strut with pipe clamp and end caps



16" StrongStrut - Z Clamp

IMS-16long3/8BCM

16" long Strong Strut with Z clamps and end caps



8" StrongStrut - Z Clamp

IMS-8long3/8BCM

8" long Strong Strut with Z clamps



16" StrongStrut - Egyptian

IMS-16long3/8E

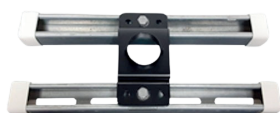
16" long Strong Strut with the "Egyptian" threaded ceiling mount and end caps



8" StrongStrut - Egyptian

IMS-8long3/8E

8" long Strong Strut with Egyptian mount and end caps



2x 16" StrongStrut - Egyptian

IMS-16long3/8ED

Two 16" long Strong Struts with the "Egyptian" threaded ceiling mount and end caps



2x 8" StrongStrut - Egyptian

IMS-8long3/8ED

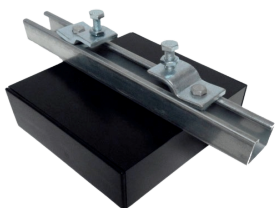
Two 8" long Strong Struts with the "Egyptian" threaded ceiling mount and end caps



Adjustable Beam Pitch Hanger Mount-Egyptian

SP-AdjBPHMount

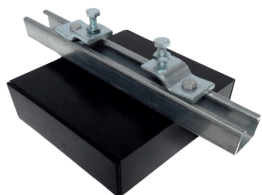
This Beam Clamp assemble is 24" wide and will accommodate a beam up to 18" wide.



8" CamBlox - Z Clamps

8" CamBlox with 14" Strong Strut and Z clamps

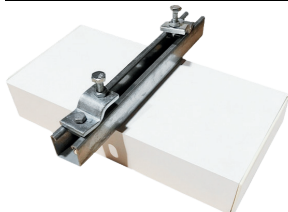
IMS-CBBCMS



12" CamBlox - Z Clamps

12" CamBlox with 14" Strong Strut and Z clamps

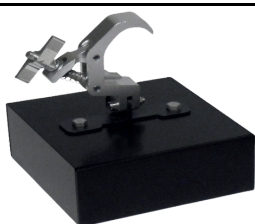
IMS-CBBCMD



16" CamBlox - Z Clamps

16" CamBlox with 14" Strong Strut and Z clamps

IMS-CBBCMT



8" CamBlox - Pipe Clamp

8" CamBlox with pipe clamp

IMS-CBPCMS



12" CamBlox - Pipe Clamp

12" CamBlox with pipe clamp

IMS-CBPCMD



16" CamBlox - Pipe clamp

16" CamBlox with pipe clamp

IMS-CBPCMT



8" CamBlox - Pendant

8" CamBlox with pendant mount
1.5" NPT threaded connection

IMS-CBPMS



12" CamBlox - Pendant

12" CamBlox with pendant mount
1.5" NPT threaded connection

IMS-CBPMD



16" CamBlox - Pendant

16" CamBlox with pendant mount
1.5" NPT threaded connection

IMS-CBPMT

*CamBlox - Pendant Available in Black and White



10' StrongStrut - Short Slots

10 ft. stick of 1-5/8" Channel Strong Strut w/ Short Slots



14" StrongStrut - Short Slots

14" piece of 1-5/8" Channel Strong Strut w/ Short Slots

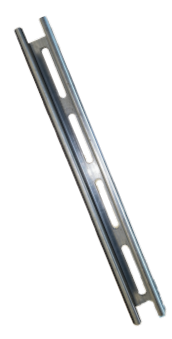
IMS-SSS-14



10' StrongStrut - Long Slots

10' stick of 1-5/8" Channel Strong Strut w/ Long Slots

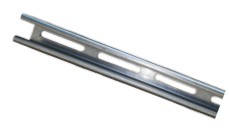
IMS-SSL



16" StrongStrut - Long Slots

16" piece of 1-5/8" Channel Strong Strut w/ Long Slots

IMS-SSL-16



8" StrongStrut - Long Slots

8" piece of 1-5/8" Channel Strong Strut w/ Long Slots

IMS-SSL-8



Worm-gear Mounting Bands

100-200mm stainless steel bands

IMS-SSBands

Worm-gear Mounting Bands

100-300mm stainless steel bands

IMS-SSBandsXL



Threaded Ceiling Mount Adapter

IMS-E

The “Egyptian” threaded ceiling mount adapter with set screws allows you to mount equipment from ceilings using a pipe drop system.

Available only in Black



Pipe Clamp

Pipe clamp with bracket at bottom

IMS-PC



Z Clamp

Z clamps

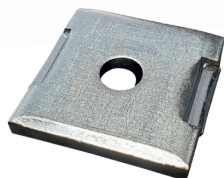
IMS-Z



StrongStrut Nut

3/8” Strong Strut nut without spring

IMS-SS38nut



StrongStrut Washer

Square Strong Strut washer for 3/8” HDW w/Channel guide

IMS-SS38SqW



StrongStrut Cap

Plastic End Cap for 1-5/8” Strong Strut

Available in White and Black

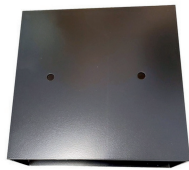
IMS-SSCap



StrongStrut Mounting Bolt

3/8” bolt used to mount things to Strong Strut

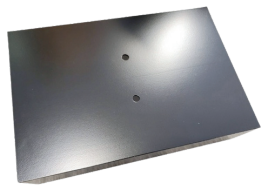
IMS-SS38Bolt



CamBlox

CamBlox Single Body (8"x8"x3")

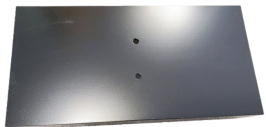
IMS-CBS



CamBlox

CamBlox Double Body (8"x12"x3")

IMS-CBD



CamBlox

CamBlox Triple Body (8"x16"x3")

IMS-CBT



CamBlox Cap

CamBlox Caps (priced individually)

IMS-CBCap



MAP & Junction Box Solid Plate

Junction & MAP Full bottom plate with 4 holes

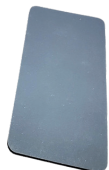
IMS-JMAPBP



Hand Hole Cover

Junction Hand Hole Cover with 2 screws

IMS-JHHC



Hand Hole Gasket

Junction Hand Hole black foam gasket

IMS-JHHG



MAP & Junction Box Threaded

Junction & MAP Top Plate with 1.5" NPT threaded center hole and 2 set screws

IMS-JMAPTPP



4x4 Gasket

Junction & MAP 4"x4" black foam gasket with 4 corner holes

IMS-JMAPTPG



Multi-Purpose Hand Hole Gasket

IMS-MP68Gasket

MP68 Hand Hole gasket



Multi-Purpose Hand Hole Cover

IMS-MP68HHC

MP68 Hand Hole Cover with 2 screws



MAP 1.5" Cap

IMS-MAPCap

MAP 1.5" cap to cover main holes - Birdhouse plugs



MAP Small Caps

IMS-MAPCapTiny

MAP cap for tiny holes on each side



8x10 Birdhouse Main Hole Caps

IMS-MP810Cap

MP810 1.5" cap to cover main holes - Birdhouse plugs



6x8 Multi-Purpose Box Main

IMS-MP68Caps

MP68 1-1/8" caps to cover main holes



5/8-11 x 1 Torx Screw

IMS-JMAPTORX

Junction & MAP 5/8-11 X 1 BH TORX SCREW ALLOY STANDARDIZE



CamBlox glands

IMS-CBGlands

CamBlox glands



CamBlox - StrongStrut Hardware

IMS-CBSSHardware

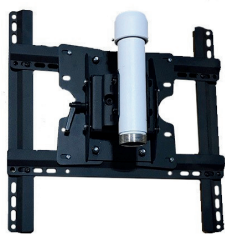
CamBlox Strong Strut hardware pack



CamBlox - Pipe Clamp Hardware

IMS-CBPCHardware

CamBlox Pipe Clamp hardware pack



TV Mount

IMS-TV

TV Mount with 8" Pendant Drop and Threaded Collar



Dual TV Mount

IMS-TV2

Two TV Mounts with 8" Pendant Drop and Threaded Collar



TV Mount

IMS-TVMount

TV mount



TV Mount Bolts

IMS-TVMountBolts

Bolts to attach TV Mount
 Grade5 HHCS Bolts 5/16-18 x 3
 5/16" - 18 Nylon Lock Nuts
 5/16" Standard Flat Washers

FOUNDATION RECOMMENDATIONS

NOTE:

- Never go below the minimums, but if your Foundation Engineer designs a foundation that is a greater diameter or deeper depth, please follow the Engineer's specifications.
- If using a Concrete Form (tube), backfill with concrete between the form and undisturbed soil. This may be performed before or after filling the tube with concrete. The last foot of depth may be filled with soil and compacted.
- Your concrete can rise above ground level a maximum of 2 feet and still maintain our designed stability (common practice in parking lots and other areas where vehicles may impact a pole).
- If constructing your foundation near high vibration areas (such as next to railroad tracks), always go larger and deeper than the minimums.

Direct Bury Type Poles:

Each StrongPole Direct Bury Pole is clearly marked at the Factory for correct bury depth. When installing a Direct Bury Pole, DO NOT back-fill with soil, as this will not be as stable as it needs to be. Pour concrete to fill the area between the pole and the undisturbed soil. The last foot of depth may be filled with soil and compacted.

If using a Concrete form, after filling the form around the pole with concrete, fill outside the form with concrete as well instead of back-filling dirt around the form. The last foot of depth outside the form may be filled with soil and compacted.

Expanding foam concrete not recommended or approved!

We have had several reports of the expanding foam concrete material shrinking back from the pole and sides of the hole. This makes for a very unstable and shaky foundation. If you insist on using this method, please test the foam before installation of your pole. We have not yet found a foam that does not shrink back. If you find a product that performs well we would love to know about it. Good luck!

Mounting a Pole to a Parking Garage Deck:

This is not recommended, and your installation may not have the same rigidity or strength as a foundation that is correctly built. If you are forced to mount a **StrongPole** this way, make sure the concrete deck is at least 10" thick, and use anchors that are at least ½" diameter, and at least 6" long.

Mounting to a Dock or Pier:

This is not recommended at all, and could result in less stability and more shake than desired. No Pole over 12 ft should be mounted to a dock or pier.

If the dock you will be mounting to is concrete, then the minimums listed above for garage decks should be followed. Any thinner should be bolted instead of anchored, with a steel plate (at least twice as large as the base, and a minimum of ¼" thick), should be used below the deck/dock.

If the pier or dock is wood, then bolt the pole with a steel plate below the dock/deck (at least twice the diameter of the pole base, and at least ¼" thick).

Concrete Foundation Mounting – Minimum Foundation Diameters and Depths

Pole Height	Most Hard Clay Soils	Most Sandy Soils
12 ft Pole	18" Diameter 4 ft Deep	24" Diameter 5 ft Deep
16 ft Pole	18" Diameter 4 ft Deep	24" Diameter 5 ft Deep
20 ft Pole	24" Diameter 5 ft Deep	30" Diameter 6 ft Deep
25 ft Pole	30" Diameter 5 ft Deep	30" Diameter 6 ft Deep



Warranty

This Warranty only covers products manufactured by Strong Poles and does not cover any products manufactured by others. These products carry their own warranties and should be considered before returning any products. Strong Poles will not accept returned items without prior written return authorization or an authorization number.

For any breach by Strong Poles of this limited warranty, the exclusive remedy of the Customer and the sole liability of Strong Poles shall be, at the option of Strong Poles, to replace or repair the affected products, or to refund to the Customer the price of the affected products. The availability of replacement products is subject to product discontinuance policies at Strong Poles. All Strong Poles are warranted for a period of twenty (20) years from the date of purchase to the original buyer with proof of purchase. This warranty does not cover the costs of removing and re-installing the accessories. All warranties are limited to replacement and/or repair. This warranty does not cover acts of nature such as lightning damage and failures or corrosion due to improper installation, misapplication (product used outside of specified use), damage from handling, transportation, installation, vehicular impact, abuse, or vandalism, site-specific wind-induced or other vibration, or improper grounding. This warranty does not include reimbursement for the expense of installation or removal of equipment, transportation, or any other expenses which may be incurred. This warranty applies to the pole assembly only and does not include anchor bolts, connecting hardware, or foundation. Authorization must be obtained from Strong Poles before any material is returned. This warranty excludes finishes such as powder coating and anodizing.

Paint Finish Warranty:

Strong Poles warrants its factory-applied powder coatings against cracking, peeling, or excessive fading due to normal climatic exposure for a period of five (5) years from the date of shipment. Damage to the finish coating caused by mechanical abuse, such as rough handling during installation or vandalism, is not covered by this warranty. This warranty is limited to the repair or replacement of the material involved and does not include reimbursement of consequential expenses such as installation or removal of equipment or transportation costs.

Bolt-on Platforms and Attachments Warranty:

Strong Poles warrants all of our add-on platforms and attachments for a period of one (1) year from the date of shipment. Damage caused by mechanical abuse, such as rough handling during installation or vandalism, is not covered by this warranty. This warranty is limited to the repair or replacement of the platform or attachments involved and does not include reimbursement of consequential expenses such as installation or removal of equipment or transportation costs.



STRONGPOLES

THE SECURITY INDUSTRY STANDARD

NOTES:

WWW.STRONGPOLES.COM

844-669-3537



Lined area for notes, consisting of multiple horizontal lines on a white background.

STEADYMAX
the most rigid poles in the world



For more details about our custom solutions, please feel free to reach out to us directly. We're here to help you find the best mounting options for your needs!



STRONGPOLES
SECURITY MOUNTING SOLUTIONS

(Place Business Card Here)