

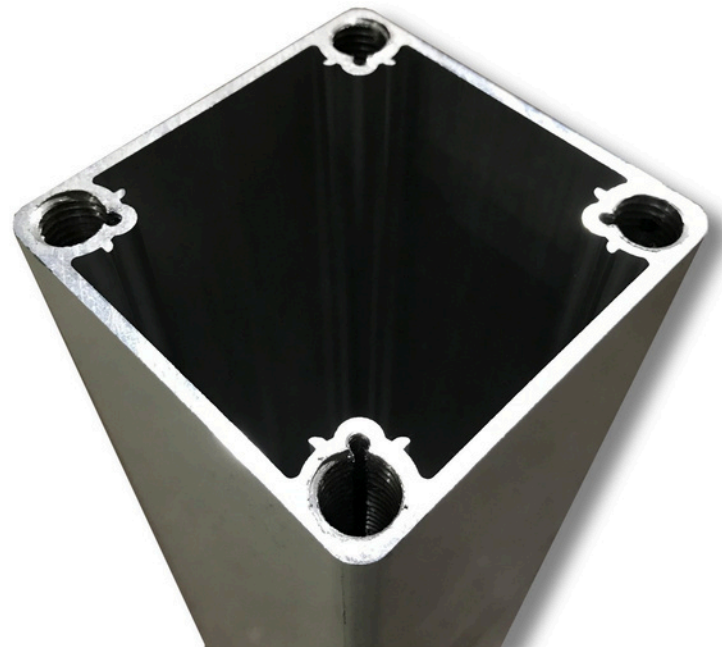
4" SQUARE CAMERA POLE

Built out of a special Aerospace Aluminum, these 4" Security Camera Poles are designed to reduce the amount of movement and shake commonly found with many light poles.

Available in 5, 8, 10, 12, and 15 feet tall

These innovative poles and the modular bolt-on accessories that make up this complete Security Mounting System, have a number of features that have revolutionized the mounting of security cameras and all types of security-related devices.

- Designed to fit any technology –any brand– Wireless or Wired
 - Patented “No-Welds” Technology yields more strength than any other pole (35,000 psi yield strength)
 - Internal Corner Tubing Shafts molded in
 - Made of a unique Aerospace Aluminum (6005-T5)
 - 2”x4-1/2” Hand hole opening
 - Choice of Dark Bronze/Black or White Powder Coat
 - Mounting Base uses an 8.5” BCD bolt Pattern
 - Tilt-Over Bases have the same bolt pattern and are an upgrade when ordering.
- TOBs require a different anchor basket.



All Strong Poles are in conformance with requirements of AASHTO Spec(5thEdition), NEC Codes, International Building Codes 2001.



available Fixed base



available Tilt-Over base
(Uses different anchor basket)

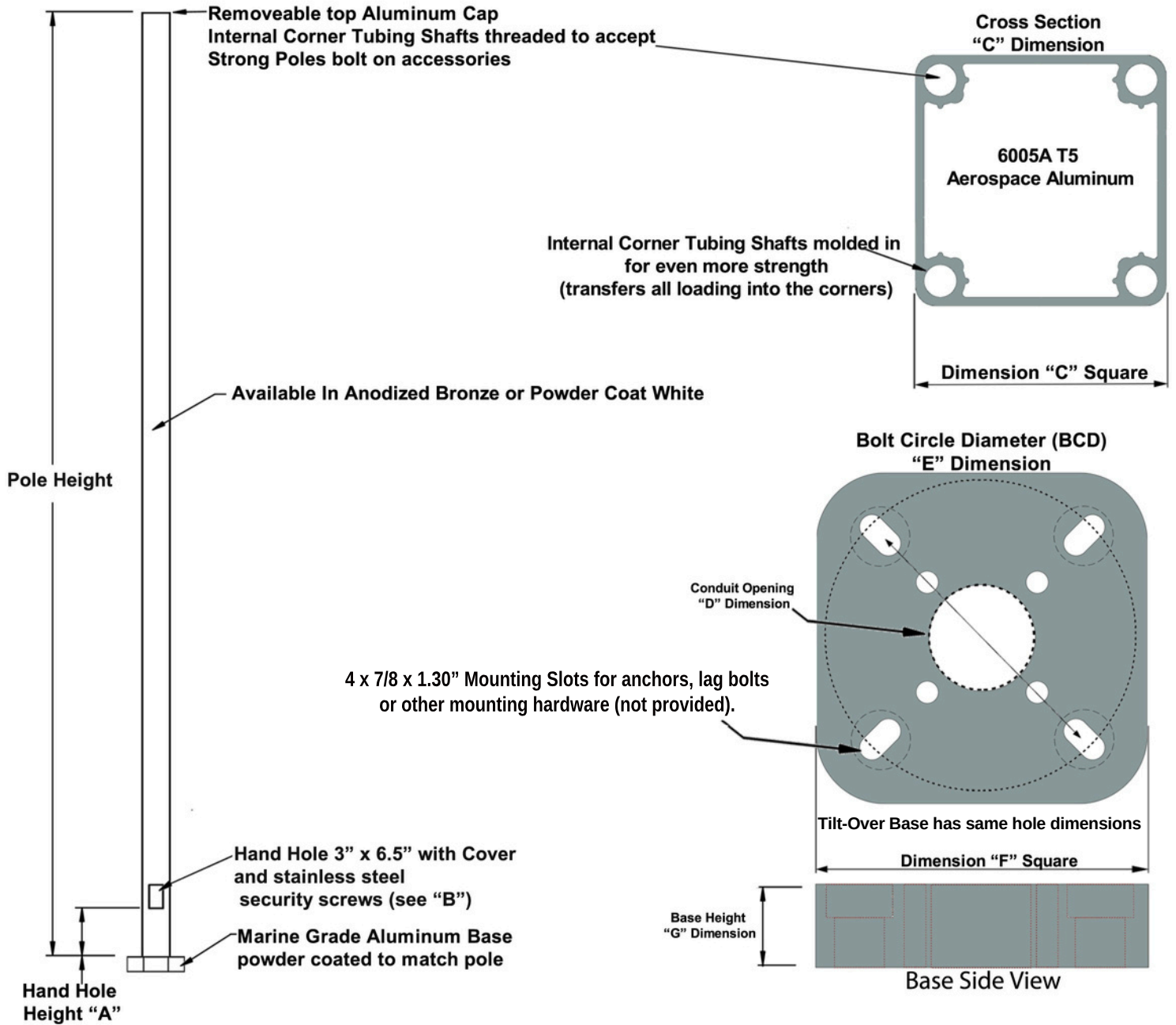
**Don't Settle for a repurposed light pole.
Choose the engineered solution.
StrongPoles.com / 844-669-3537**



STRONGPOLES

THE SECURITY INDUSTRY STANDARD Made in the USA

4" Square Poles Specifications



Part Number	Pole Height (in.)-(mm)	Pole Weight w/ base	A (in.)	B(in.)	C (in.)	D (in.)	E (in.)	F (in.)	G (in.)
SP-5	5' - (1.52m)	45lb	18	2" x 4.5"	4"	2.90"	8.50"	10.00"	2.5"
SP-8	8' - (2.43m)	60lb	18"	2" x 4.5"	4"	2.90"	8.50"	10.00"	2.5"
SP-12	12' - (3.65m)	75lb	18"	2" x 4.5"	4"	2.90"	8.50"	10.00"	2.5"

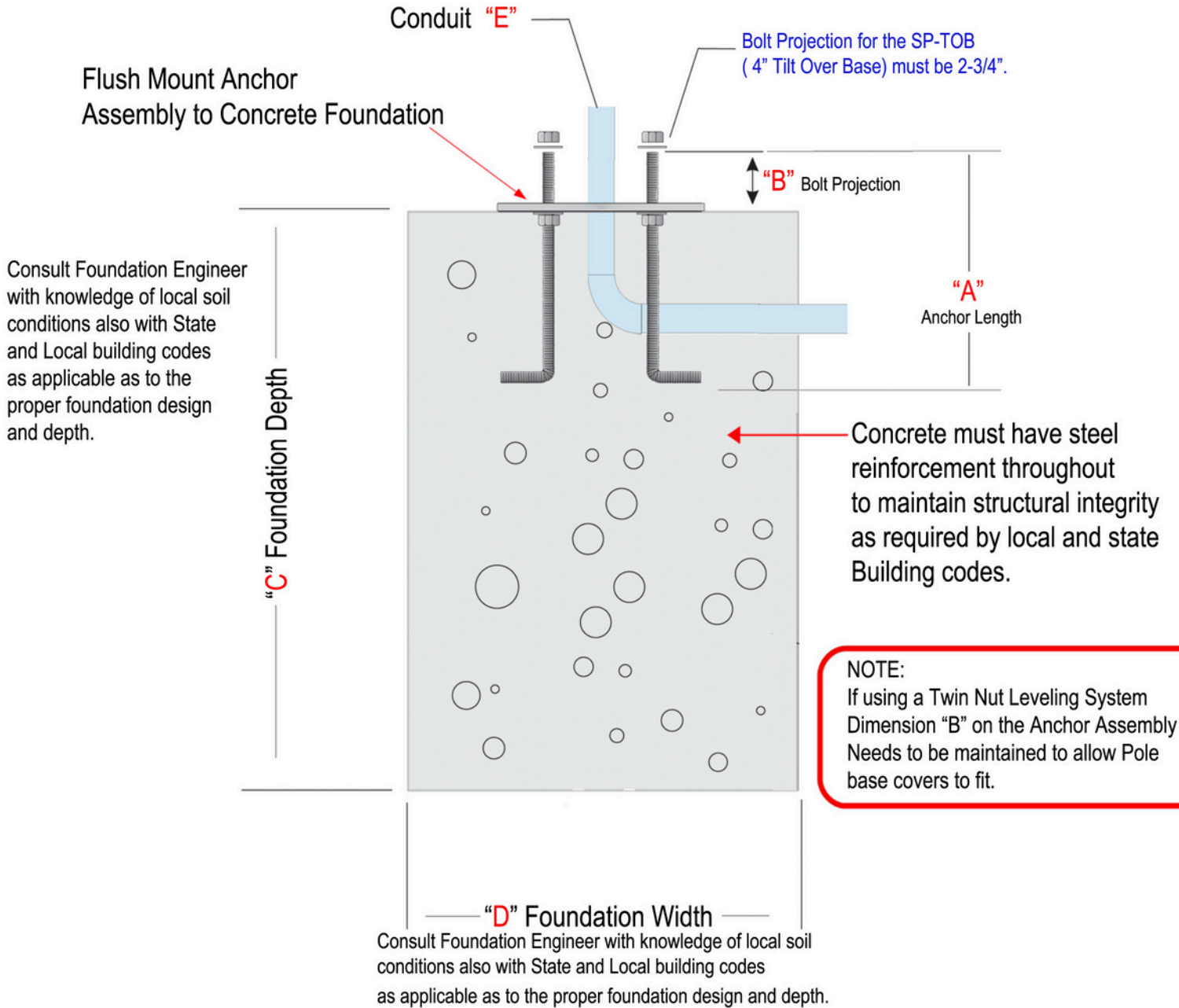
	DIA	Height	EPA Wind Velocity (MPH)				Weight	BCD
	inch	ft.	90	100	120	150	lbs	inch
SP-12	4.00"	12'	17.4	13.5	8.89	5.76	55	8.5"

www.strongpoles.com
844-669-3537





Foundation & Anchor Assembly Recommendations



Pole Size	StrongForms	Anchor Assembly Part #	"A"	"B" Bolt Projection	"C & D"	"E" Conduit Size	BCD
SteadyMax SP-SM16	StrongForm-18-5	Included	30"	2-3/4"	Consult Foundation Engineer	Maximum OD 4"	9.5"
SteadyMax SP-SM20	StrongForm-24-5	Included	36"	2-3/4"		Maximum OD 4"	11.5"
SteadyMax SP-SM25	StrongForm-30-6	Included	36"	2-3/4"		Maximum OD 4"	11.5"
4" Square Poles	StrongForm-18-5	SP-AB	18"	2-1/4" **		Maximum OD 3"	8.5"
	StrongForm-24-5						

** NOTE-Bolt Projection for the SP-TOB (4" Tilt Over Base) must be 2-3/4".

www.strongpoles.com

844-669-3537



SECTION 282000 - VIDEO SURVEILLANCE

PART 1 GENERAL

1.01 SECTION INCLUDES

- A. Accessories.

1.02 RELATED REQUIREMENTS

- A. Section 033000 - Cast-in-Place Concrete: Materials and installation requirements for concrete bases for camera poles.
- B. Section 078400 - Firestopping.
- C. Section 260526 - Grounding and Bonding for Electrical Systems.
- D. Section 260529 - Hangers and Supports for Electrical Systems.
- E. Section 260553 - Identification for Electrical Systems: Identification products and requirements.

1.03 REFERENCE STANDARDS

- A. AASHTO LTS - Standard Specifications for Structural Supports for Highway Signs, Luminaires and Traffic Signals 2013 (Revised 2019).
- B. IEEE C2 - National Electrical Safety Code 2017.
- C. NECA 1 - Standard for Good Workmanship in Electrical Construction 2015.
- D. NECA 303 - Standard for Installing and Maintaining Closed-Circuit Television (CCTV) Systems 2019.

1.04 ADMINISTRATIVE REQUIREMENTS

- A. Coordination:
 - 1. Coordinate the placement of cameras with structural members, ductwork, piping, equipment, luminaires, diffusers, fire suppression system components, and other potential conflicts installed under other sections or by others.
 - 2. Coordinate the work with other installers to provide power for cameras and equipment at required locations.
 - 3. Notify Architect of any conflicts with or deviations from Contract Documents. Obtain direction before proceeding with work.

1.05 SUBMITTALS

- A. See Section 013000 - Administrative Requirements, for submittal procedures.
- B. Product Data: Provide manufacturer's standard catalog pages and data sheets for each system component. Include ratings, configurations, standard wiring diagrams, dimensions, finishes, service condition requirements, and installed features.
 - 1. Camera Poles: Include information on maximum supported effective projected area (EPA) and weight for design wind speed.
- C. Camera Poles: Certify that products and associated supports comply with specified structural design criteria.

PART 2 PRODUCTS

2.01 ACCESSORIES

- A. Camera Mounting Supports: Where not factory installed, provide mounting supports necessary for installation.
 - 1. Products:
 - a. StrongPoles, LLC; HD Parapet Camera Mount: www.strongpoles.com/#sle.
 - b. StrongPoles, LLC; Parapet Mount: www.strongpoles.com/#sle.
 - c. StrongPoles, LLC; Surface Mount Pole: www.strongpoles.com/#sle.
- B. Camera Poles:
 - 1. Provide poles suitable for cameras, supports, and accessories to be installed.
 - 2. Structural Design Criteria:

- a. ComplywithAASHTOLTS.
 - b. WindLoad: Includeeffectiveprojectedarea(EPA)ofcameras,supports,and accessories to be installed.
 - 1) DesignWindSpeed: [_____]mph([_____]kph),withgustfactorof1.3.
 - c. DeadLoad: Includeweightofproposedcameras,supports,andaccessories.
 - d. [_____].
- 3. PoleConfiguration: Asindicatedondrawings.
 - 4. PoleConfiguration:
 - a. Material: Usesteeloraluminum.
 - b. Shape: Usesquareorround,straighortapered.
 - c. MountingHeight: [_____],unlessotherwiseindicated.
 - d. Mounting: Installonconcretefoundation,heightasindicatedonthedrawings,unlessotherwise indicated.
 - 5. Providegroundlug,accessiblefromhandhole.
 - 6. Providethefollowing:
 - a. Topcap.
 - b. Handhole.
 - c. Anchorboltswithlevelingnutsorlevelingshims.
 - d. Anchorbasecover.
 - e. Pole-toptenon,sizeasrequiredforinstalledcamera/bracket.
 - 7. Products:
 - a. StrongPoles,LLC;SteadyMaxCameraPoles: www.strongpoles.com/#sle.
 - b. StrongPoles,LLC;4InchSquareCameraPoles: www.strongpoles.com/#sle.
 - c. StrongPoles,LLC;5InchSquareDirect-BurialCameraPoles: www.strongpoles.com/#sle.
- C. Provide components as indicated or as required for connection of video surveillance system to devices and other systems indicated.
 - D. Provide cables as indicated or as required for connections between system components.
 - E. Provide accessory racks/cabinets as indicated or as required for equipment mounting.

PART 3 EXECUTION

3.01 EXAMINATION

- A. Verify that field measurements are as indicated.
- B. Verify that ratings and configurations of system components are consistent with the indicated requirements.
- C. Verify that mounting surfaces are ready to receive system components.
- D. Verify that branch circuit wiring installation is completed, tested, and ready for connection to system where applicable.
- E. Verify that conditions are satisfactory for installation prior to starting work.

3.02 INSTALLATION

- A. Install video surveillance system in accordance with NECA 1 (general workmanship) and NECA 303.
- B. Install products in accordance with manufacturer's instructions.
- C. Provide required support and attachment in accordance with Section 260529.
- D. Pole-Mounted Cameras:
 - 1. Maintainthefollowingminimumclearances:
 - a. ComplywithIEEEC2.
 - b. Complywithutilitycompanyrequirements.
 - 2. Foundation-MountedPoles:
 - a. Providecast-in-placeconcretefoundationsforpolesasindicated;seeSection 033000.

- 1) Install anchor bolts plumb using template furnished by pole manufacturer.
 - 2) Position conduit to enter pole shaft.
 - b. Install foundation plumb.
 - c. Install poles plumb, using leveling nuts or shims as required to adjust plumb.
 - d. Tighten anchor bolt nut to manufacturer's recommended torque.
 - e. Install nonshrink grout between pole anchor base and concrete foundation, leaving small
 - f. channel for condensation drainage.
Install anchor base covers or anchor bolt covers as indicated.
3. Embedded Poles: Install poles plumb.
- E. Provide grounding and bonding in accordance with Section 260526.
 - F. Install firestopping to preserve fire resistance rating of partitions and other elements, using materials and methods specified in Section 078400.
 - G. Identify system wiring and components in accordance with Section 260553.

END OF SECTION